



INSTRUCTION BULLETIN

No. 340549
Machine: ATLV 4300
Published: 5-02
Rev. 00

NOTE: DO NOT DISCARD the Parts List from the Instruction Bulletin. Place the Parts List in the appropriate place in your machine manual for future reference. Retaining the Parts List will make it easier to reorder individual parts and will save you the cost of ordering an entire kit.

NOTE: Numbers in parenthesis () are reference numbers for parts listed in Bill of Materials.

Installation instructions for **kit number 368672**

DESCRIPTION:

This kit contains the parts needed to install a hopper cover support kit on the model ATLV 4300 Litter Vacuum.

Please follow step-by-step instructions.

SPECIAL TOOLS / CONSIDERATIONS: Hand drill, 3/8 drill bit.

(Estimated time to complete: 1 hour)

PREPARATION:

(Refer to FIG. 1 and 2)

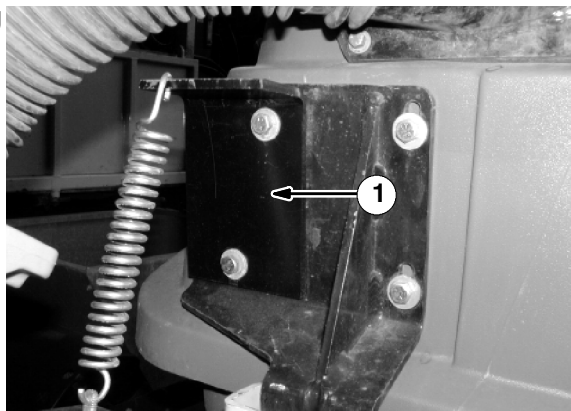
1. Turn the machine power on. See the STARTING THE MACHINE section of the manual.

FOR SAFETY: Before leaving or servicing machine, stop on level surface and set parking brake. Then turn off machine and remove key.

INSTALLATION:

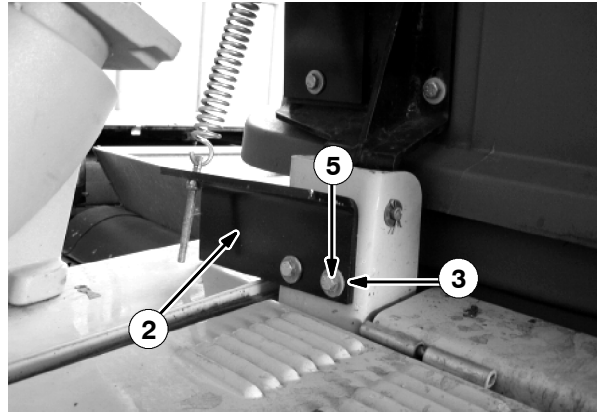
(Refer to FIG. 1 and 2)

1. Locate the hopper cover hinge on the right hand side of the machine.
2. Remove the two outside bolts and washers securing the hinge to the hopper on the right hand side of the machine. Mount the angle (1) to the outside of the right side hinge using the hinge mounting hardware.



3. Using the dimensions shown in figure 2, and the smaller angle (2) as a template, mark and drill two 3/8 mounting holes in the right side hinge mounting bracket. (Refer to FIG 1 and 2).

4. Mount the smaller angle (2) to the hinge mounting bracket with two M08 hex screws (5), washers (3) and M08 lock nuts (6). (Refer to FIG 2).



Mount 368662 to right hinge 367160 with hinge mounting hardware.

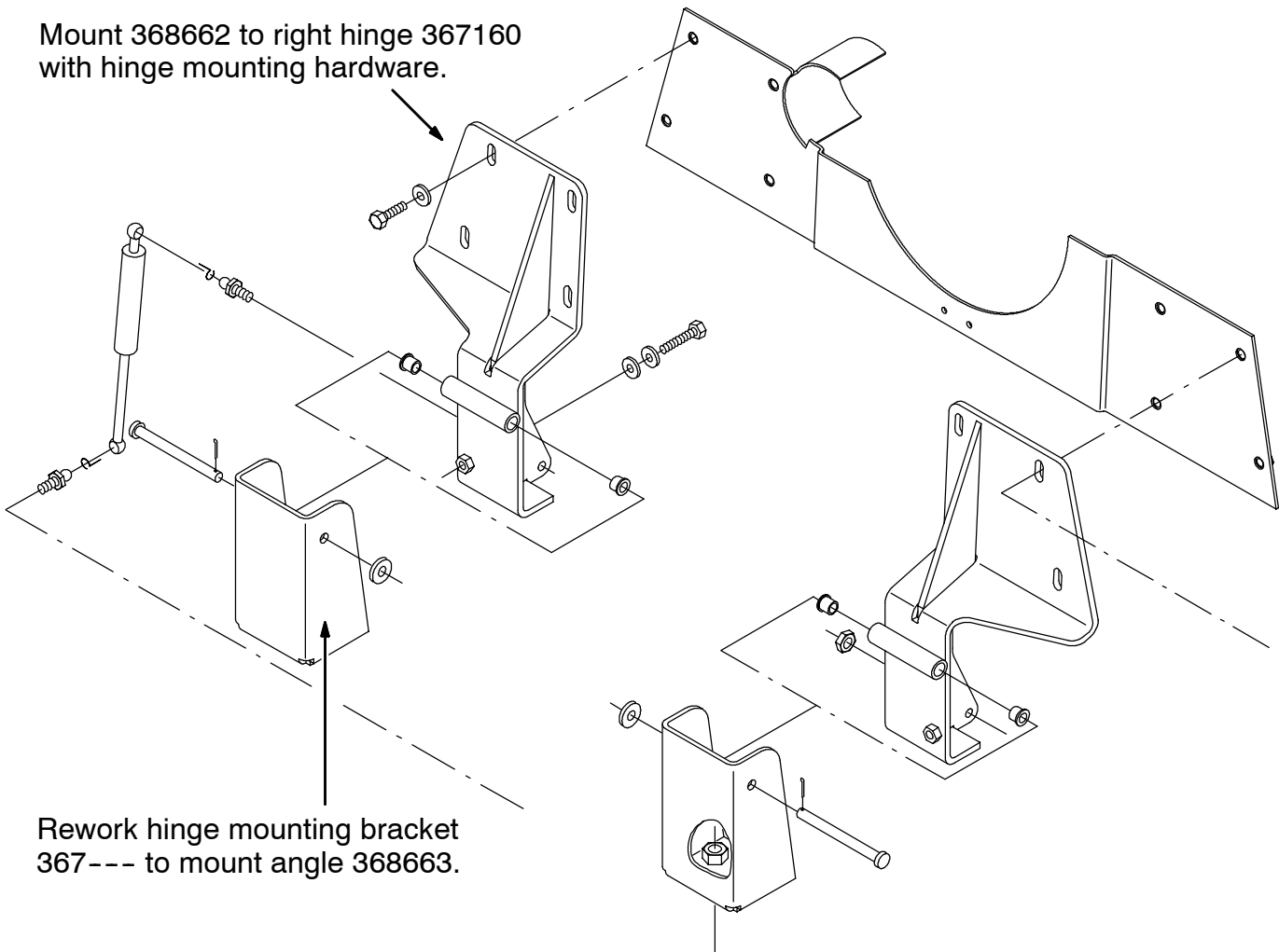
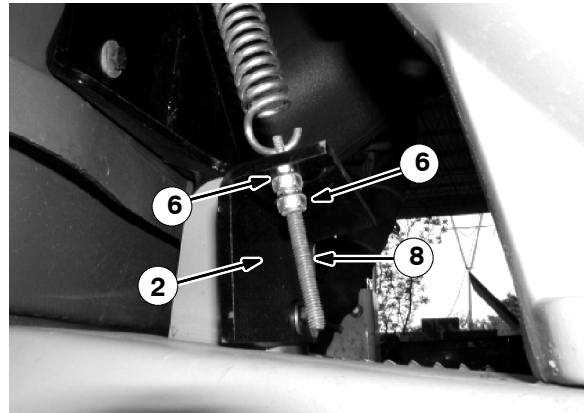


FIG. 1 - Angle Mounting Locations

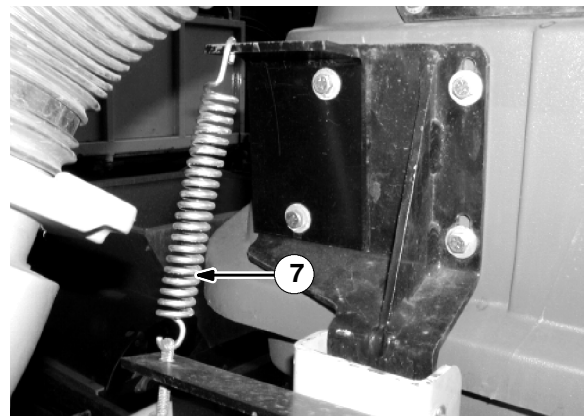
5. Install the eye bolt (8) in the hole in the top of the smaller angle (2). Secure the eye bolt (8) in place with two lock nuts (6). (Refer to FIG 2)



6. Connect one end of the tension spring (7) to the large angle (1) mounted against the right hinge. (Refer to FIG 2)

7. Connect the other end of the tension spring (7) to the hole in the top of the eye bolt (8). (Refer to FIG 2)

8. Adjust the spring (7) tension with the eye bolt (8) and hex nuts (6). Secure the hex nuts (6) after the eye bolt is in the desired position.



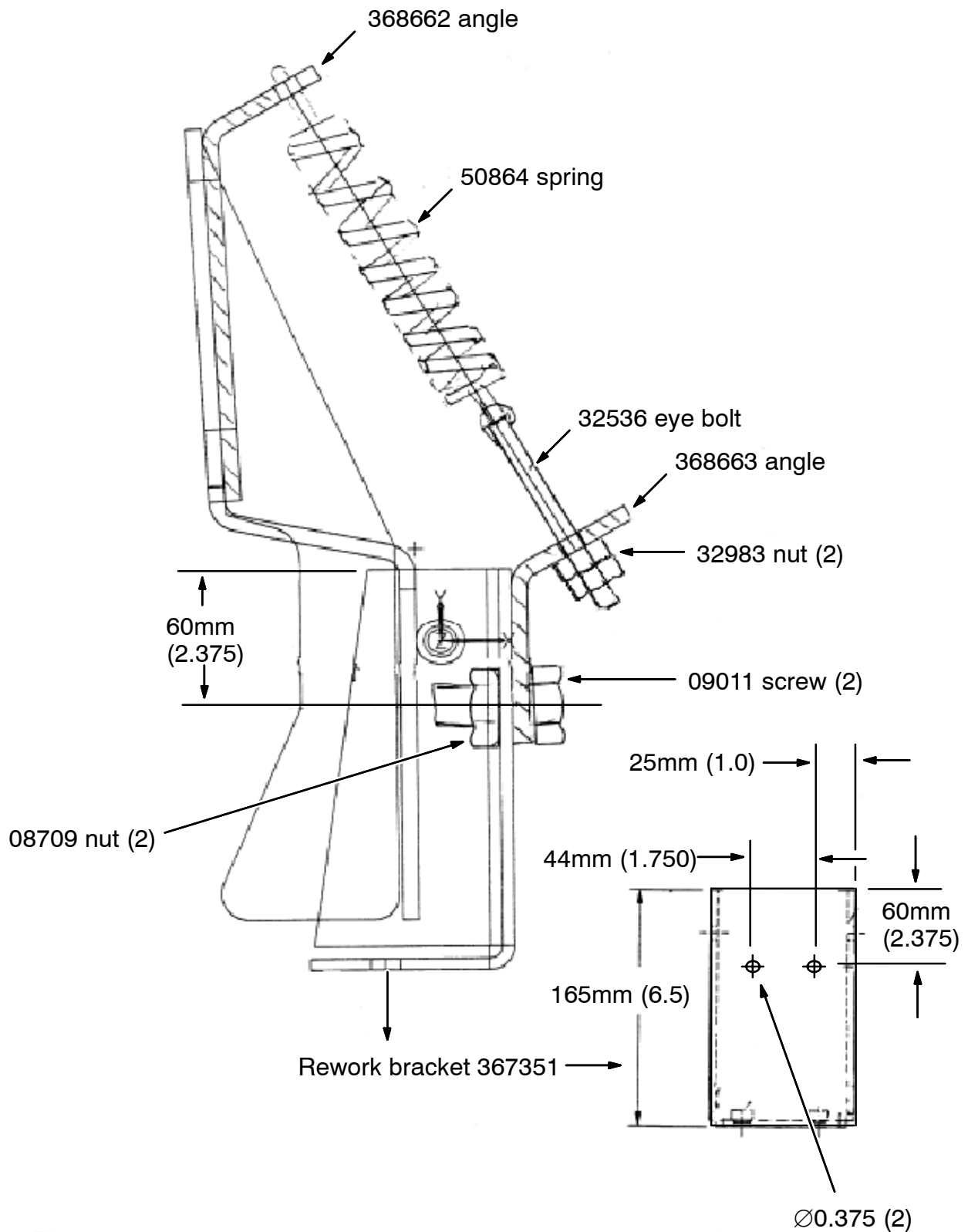


FIG. 2 - Hopper Support Installation

BILL OF MATERIALS FOR HOPPER COVER SUPPORT KIT 368672

Ref.	TENNANT Part No.	Description	Qty.
1	368662	Angle, mtg, spring, hppr cover	1
2	368663	Angle, mtg, spring, hppr cover	1
3	32491	Washer, flat, 0.31 std	3
4	08709	Nut, hex, lock, M08 X 1.25, NL	2
5	09011	Screw, hex, M08 X 1.25 X 30, Ss	2
6	32983	Nut, hex, lock, 0.31-18, NL	2
7	50864	Spring, tension	1
8	32536	Bolt, eye,	1

TENNANT COMPANY
P. O. Box 1452
Minneapolis, MN 55440-1452